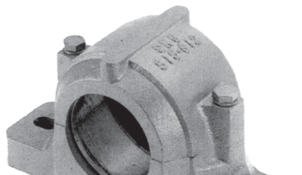



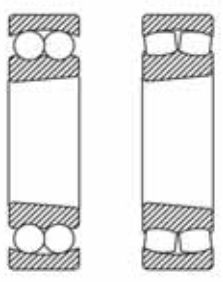
PALIER À SEMELLE



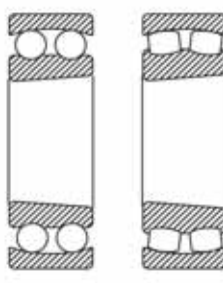
| | | |
|---|--|--|
|  | SNG - Palier fonte à semelle - demi coquilles démontables Roulement des séries 1300/2300 à billes, 21000-22000-23000 à rouleaux | |
| | Palier démontable à semelle en fonte. Pour roulements à rotule à deux rangées de billes ou rouleaux. Système modulaire qui permet de combiner plusieurs types d'étanchéités. | Possibilité blocage roulement par bague de calage Bague de montage du roulement sur l'arbre avec serrage conique. Joint au choix : Polyuréthane, NBR, Labyrinthe. Disque de fermeture pour palier borgne. |

| | | | | | | | | |
|---|------------------------|--------------------|--------------------|--------------------|--------------------|-----------|-----------|-----------|
|  <p>SÉLECTEUR</p> | Type de paliers | SNG 511-609 | SNG 512-610 | SNG 513-611 | SNG 515-612 | | | |
| | CODE | 8PSNG511 | 8PSNG512 | 8PSNG513 | 8PSNG515 | | | |
| | P.U.Ht. | 54.00 | 55.80 | 87.10 | 87.66 | | | |
| | Hauteur d'axe | 70 | | | | 80 | | |
| | ø Arbre | 50 | 40 | 55 | 45 | 60 | 50 | 65 |


ÉQUIPEMENT AVEC ROULEMENTS ETROITS DOUBLE RANGEE

| | | | | | | | | | |
|--|--------------------------------------|-----------|----------|------------|----------|----------|------------|------------|--------|
|  <p>Roulements étroits</p> | A billes série 1000 (code) | 1211K | 1309K | 1212K | 1310K | 1213K | 1311K | 1215K | 1312K |
| | P.u. HT € | 19.67 | 25.31 | 26.12 | 30.86 | 28.53 | 40.82 | 37.55 | 41.26 |
| | A rouleaux série 21000 (code) | - | 21309K | - | 21310K | - | 21311K | - | 21212K |
| | P.u. HT € | | 62.87 | | 68.62 | | 81.07 | | 85.14 |
| | Bague conique complète (code) | H211 | H309 | H212 | H310 | H213 | H311 | H215 | H312 |
| P.u. HT € | 7.27 | 6.47 | 8.93 | 7.71 | 9.83 | 8.51 | 16.48 | 9.30 | |
| Anneau de centrage (code) | SR100X11.5 | SR100X9.5 | SR110X13 | SR110X10.5 | SR120X14 | SR120X11 | SR130X15.5 | SR130X12.5 | |
| P.u. HT € | 6.32 | 5.81 | 6.11 | 4.81 | 9.64 | 6.21 | 9.86 | 9.06 | |

EQUIPEMENT AVEC ROULEMENTS LARGE DOUBLE RANGEE

| | | | | | | | | | |
|--|--------------------------------------|---------|----------|---------|----------|---------|------------|----------|--------|
|  <p>Roulements larges</p> | A billes série 2000 (code) | 2211K | 2309K | 2212K | 2310K | 2213K | 2311K | 2215K | 2312K |
| | P.u. HT € | 26.12 | 37.00 | 32.65 | 46.12 | 37.56 | 81.69 | 52.49 | 85.15 |
| | A rouleaux série 22000 (code) | 22211K | 22309K | 22212K | 22310K | 22213K | 22311K | 22215K | 22312K |
| | P.u. HT € | 52.96 | 64.37 | 62.00 | 82.44 | 73.08 | 88.20 | 80.82 | 107.57 |
| | Bague conique complète (code) | H311 | H2309 | H312 | H2310 | H313 | H2311 | H315 | H2312 |
| P.u. HT € | 8.51 | 7.96 | 9.30 | 10.15 | 13.14 | 10.44 | 18.68 | 13.46 | |
| Anneau de centrage (code) | SR100X9.5 | SR100X8 | SR110X10 | SR110X8 | SR120X10 | SR120X8 | SR130X12.5 | SR130X10 | |
| P.u. HT € | 5.81 | 4.71 | 5.64 | 4.77 | 6.48 | 5.93 | 9.06 | 9.06 | |

EQUIPEMENT AVEC ROULEMENTS EXTRA LARGE DOUBLE RANGEE

| | | | | | | | | |
|---|--------------------------------------|--|--|--|--|--|--|--|
|  <p>Roulements extra-large</p> | A rouleaux série 23000 (code) | | | | | | | |
| | P.u. HT € | | | | | | | |
| | Bague conique complète (code) | | | | | | | |
| | P.u. HT € | | | | | | | |
| Anneau de centrage (code) | | | | | | | | |
| P.u. HT € | | | | | | | | |

JOINTS ET ACCESSOIRES POUR SNG

| | | | | | | | | |
|-----------------------------------|------------|---------|------------|---------|------------|---------|------------|---------|
| Joint NBR (code) | TSNU511 | TSNG609 | TSNU512 | TSNG610 | TSNU513 | TSNG611 | TSNU515 | TSNG612 |
| P.u. HT € | 6.42 | 11.8 | 6.87 | 12.05 | 7.64 | 12.28 | 9.82 | 14.02 |
| Joint FEUTRE (code) | TSNC511 | | TSNC512 | | TSNC513 | | TSNC515 | |
| P.u. HT € | 5.91 | | 6.28 | | 6.65 | | 7.02 | |
| Joint labyrinthe (code) | TSNS511 | | TSNS512 | | TSNS513 | | TSNS515 | |
| P.u. HT € | 30.54 | | 33.9 | | 36.32 | | 44.25 | |
| Disque de fermeture (code) | TSU511-609 | | TSU512-610 | | TSU513-611 | | TSU515-612 | |
| P.u. HT € | 5.18 | | 5.75 | | 6.17 | | 6.71 | |

Dimensions page suivante



Type de joints



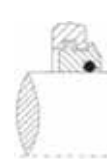
NG



NU



NC



NS



SU

| Type de paliers | SNG 516-613 | SNG 517 | SNG 518-615 | SNG 519-616 | SNG 520-617 | SNG 522-619 | SNG 524-620 |
|-----------------|-------------|----------|-------------|-------------|-------------|-------------|-------------|
| CODE | 8PSNG516 | 8PSNG517 | 8PSNG518 | 8PSNG519 | 8PSNG520 | 8PSNG522 | 8PSNG524 |
| P.u. HT € | 91.40 | 110.75 | 161.30 | 180.20 | 194.20 | 271.40 | 409.00 |

| Hauteur d'axe | 95 | | | 100 | | 112 | | | | 125 | | 140 | |
|---------------|----|----|----|-----|----|-----|----|----|----|-----|----|-----|----|
| | 70 | 60 | 75 | 80 | 65 | 85 | 70 | 90 | 75 | 100 | 85 | 110 | 90 |
| ø Arbre | | | | | | | | | | | | | |

ÉQUIPEMENT AVEC ROULEMENTS ETROITS DOUBLE RANGEE

| | | | | | | | | | | | | | |
|--------------------------------------|----------|------------|------------|------------|----------|----------|------------|--------|------------|---|------------|---|---|
| A billes série 1000 (code) | 1216K | 1313K | 1217K | 1218K | 1315K | 1219K | 1316K | - | 1317K | - | 1319K | - | - |
| P.u. HT € | 45.85 | 50.62 | 48.17 | 60.00 | 77.76 | 96.10 | 122.47 | 146.95 | 233.28 | | | | |
| A rouleaux série 21000 (code) | - | 21213K | - | - | 21215K | - | 21316K | - | 21317K | - | - | - | - |
| P.u. HT € | | 109.66 | | | 170.22 | | 150.95 | | 151.48 | | | | |
| Bague conique complète (code) | H216 | H313 | H217 | H218 | H315 | H219 | H316 | - | H317 | - | H319 | - | - |
| P.u. HT € | 17.75 | 13.14 | 23.94 | 26.90 | 18.68 | 33.91 | 20.48 | | 26.02 | | 32.18 | | |
| Anneau de centrage (code) | SR140X16 | SR140X12.5 | SR150X16.5 | SR160X17.5 | SR160X14 | SR170X18 | SR170X14.5 | - | SR180X14.5 | - | SR200X17.5 | - | - |
| P.u. HT € | 10.57 | 9.77 | 12.38 | 12.43 | 11.34 | 13.97 | 10.8 | | 14.69 | | 16.42 | | |

EQUIPEMENT AVEC ROULEMENTS LARGE DOUBLE RANGEE

| | | | | | | | | | | | | | |
|--------------------------------------|------------|----------|------------|------------|----------|------------|----------|----------|----------|------------|----------|----------|----------|
| A billes série 2000 (code) | 2216K | 2313K | 2217K | 2218K | 2315K | 2219K | 2316K | 2220K | 2317K | 2222K | 2319K | - | 2320K |
| P.u. HT € | 60.97 | 114.13 | 99.14 | 121.34 | | | | | | | | | |
| A rouleaux série 22000 (code) | 22216K | 22313K | 22217K | 22218K | 22315K | 22219K | 22316K | 22220K | 22317K | 22222K | 22319K | 22224K | 22320K |
| P.u. HT € | 93.85 | 103.44 | 101.40 | 107.35 | 152.24 | 120.31 | 176.94 | 162.32 | 187.78 | 212.50 | 258.34 | 251.78 | 348.66 |
| Bague conique complète (code) | H316 | H2313 | H317 | H318 | H2315 | H319 | H2316 | H320 | H2317 | H322 | H2319 | H3124 | H2320 |
| P.u. HT € | 20.48 | 16.49 | 26.02 | 30.78 | 27.86 | 32.18 | 31.25 | 43.63 | 36.79 | 57.35 | 52.38 | 74.37 | 54.43 |
| Anneau de centrage (code) | SR140X12.5 | SR140X10 | SR150X12.5 | SR160X12.5 | SR160X10 | SR170X12.5 | SR170X10 | SR180X12 | SR180X10 | SR200X13.5 | SR200X13 | SR215X14 | SR215X13 |
| P.u. HT € | 9.77 | 9.36 | 10.42 | 10.78 | 10.68 | 12.94 | 10.96 | 13.77 | 12.68 | 18.36 | 14.27 | 16.2 | 17.69 |

EQUIPEMENT AVEC ROULEMENTS EXTRA LARGE DOUBLE RANGEE

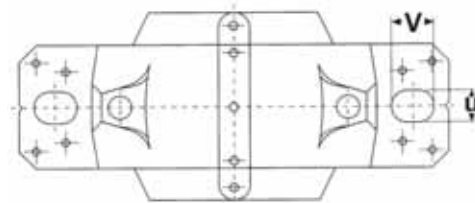
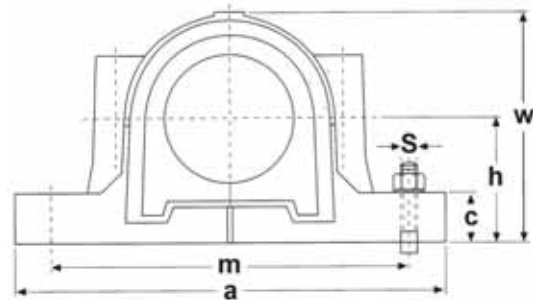
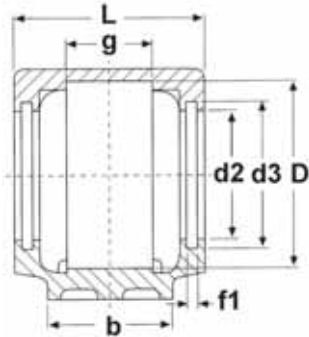
| | | | | | | | | | | | | |
|--------------------------------------|--|--|--|------------|--|--|--|-----------|--|----------|--|----------|
| A rouleaux série 23000 (code) | | | | 23218K | | | | 23220K | | 23222K | | 23224K |
| P.u. HT € | | | | 203.65 | | | | 273.52 | | 384.98 | | 468.43 |
| Bague conique complète (code) | | | | H2318 | | | | H2320 | | H2322 | | H2324 |
| P.u. HT € | | | | 45.93 | | | | 54.43 | | 77.29 | | 88.92 |
| Anneau de centrage (code) | | | | SR160X12.5 | | | | SR180X9.7 | | SR200X10 | | SR215X10 |
| P.u. HT € | | | | 10.78 | | | | 13.77 | | 13.77 | | 15.71 |

JOINTS ET ACCESSOIRES POUR SNG

| | | | | | | | | | | | | | |
|-----------------------------------|------------|---------|---------|------------|---------|------------|---------|------------|---------|------------|---------|------------|---------|
| Joint NBR (code) | TSNU516 | TSNG613 | TSNU517 | TSNU518 | TSNG615 | TSNU519 | TSNG616 | TSNU520 | TSNG617 | TSNU522 | TSNG619 | TSNU524 | TSNG620 |
| P.u. HT € | 10.2 | 15.48 | 10.85 | 13.32 | 19.23 | 15.5 | 23.78 | 16.33 | 27.4 | 17.53 | 32.01 | 19.33 | 34.9 |
| Joint FEUTRE (code) | TSNC516 | | TSNC517 | TSNC518 | | TSNC519 | | TSNC520 | | TSNC522 | | TSNC524 | |
| P.u. HT € | 8.50 | | 8.88 | 9.25 | | 9.61 | | 14.80 | | 24.40 | | 25.90 | |
| Joint labyrinthe (code) | TSNS516 | | TSNS517 | TSNS518 | | TSNS519 | | TSNS520 | | TSNS522 | | TSNS524 | |
| P.u. HT € | 46.22 | | 50.84 | 68.06 | | 97.23 | | 97.23 | | 109.3 | | 121.45 | |
| Disque de fermeture (code) | TSU516-613 | | TSU517 | TSU518-615 | | TSU519-616 | | TSU520-617 | | TSU522-619 | | TSU524-620 | |
| P.u. HT € | 9.00 | | 10.35 | 11.5 | | 12.65 | | 14.25 | | 18.8 | | 24.15 | |

PALIER À SEMELLE

Dimensions SNG (mm)



| TYPE | Ø Arbre en série 500 | Ø Arbre en série 600 | D H 8 | a | b | c | g H12 | h js11 | L | w | m | U | V | d2 H12 | d3 H12 | f1 | S | Kg |
|-------------|-------------------------|-------------------------|----------|-----|-----|----|----------|-----------|-----|-----|-----|----|----|-----------|-----------|----|-----|------|
| | | | | | | | | | | | | | | | | | | |
| SNG 511-609 | 50 | 40 | 100 | 255 | 70 | 28 | 44 | 70 | 95 | 127 | 210 | 18 | 23 | 67 | 75.5 | 5 | M16 | 4.5 |
| SNG 512-610 | 55 | 45 | 110 | 255 | 70 | 30 | 48 | 70 | 105 | 133 | 210 | 18 | 23 | 72 | 80.5 | 5 | M16 | 5 |
| SNG 513-611 | 60 | 50 | 120 | 275 | 80 | 30 | 51 | 80 | 110 | 148 | 230 | 18 | 24 | 77 | 85.5 | 5 | M16 | 6,1 |
| SNG 515-612 | 65 | 55 | 130 | 280 | 80 | 30 | 56 | 80 | 115 | 154 | 230 | 18 | 26 | 87 | 95.5 | 5 | M16 | 6,5 |
| SNG 516-613 | 70 | 60 | 140 | 315 | 90 | 32 | 58 | 95 | 120 | 175 | 260 | 22 | 29 | 92,5 | 101 | 5 | M20 | 9,0 |
| SNG 517 | 75 | - | 150 | 320 | 90 | 32 | 61 | 95 | 125 | 181 | 260 | 22 | 30 | 97.5 | 106 | 5 | M20 | 10,2 |
| SNG 518-615 | 80 | 65 | 160 | 345 | 100 | 35 | 65 | 100 | 140 | 192 | 290 | 22 | 27 | 102,5 | 111 | 5 | M20 | 12,4 |
| SNG 519-616 | 85 | 70 | 170 | 345 | 100 | 35 | 68 | 112 | 145 | 209 | 290 | 22 | 27 | 131 | 141 | 6 | M20 | 13,5 |
| SNG 520-617 | 90 | 75 | 180 | 380 | 110 | 40 | 70 | 112 | 160 | 215 | 320 | 26 | 32 | 137.5 | 147.5 | 6 | M24 | 17,5 |
| SNG 522-619 | 100 | 85 | 200 | 410 | 120 | 45 | 80 | 125 | 175 | 239 | 350 | 26 | 32 | 147.5 | 157.5 | 6 | M24 | 20,5 |
| SNG524-620 | 110 | 90 | 215 | 410 | 120 | 45 | 86 | 140 | 185 | 271 | 350 | 26 | 32 | 157,5 | 167,5 | 6 | M24 | 25,5 |

PALERS MONOBLOC À SEMELLES



UCP - Palier monobloc à semelle

- Paliers monobloc en fonte avec graisseur.
- Roulement étanche avec bague extérieure sphérique pour permettre de compenser les défauts d'alignement.
- Bague intérieure avec excentrique pour blocage sur l'arbre.

UCP2

| Ø d arbre | TYPE (code) | dimensions (mm) | | | | | | | | | | | Poids (Kg) | Ø Vis | Coef. charge (N) | | Roulements | P. HT € |
|-----------|-------------|-----------------|-----|----|------|-----|----|----|----|------|-----|------|------------|--------|------------------|-------|------------|---------|
| | | h | a | b | B1 | c | S1 | S2 | g | n | w | Dyn | | | Stat | | | |
| 20 | 8UCP204 | 33.3 | 127 | 38 | 44.5 | 95 | 13 | 19 | 14 | 12.7 | 65 | 0,66 | M10 | 12 200 | 6 350 | UC204 | 13.53 | |
| 25 | 8UCP205 | 36.5 | 140 | 38 | 48 | 105 | 13 | 19 | 15 | 14.3 | 71 | 0,81 | M10 | 13 300 | 7 500 | UC205 | 13.81 | |
| 30 | 8UCP206 | 42.9 | 165 | 48 | 53 | 121 | 17 | 20 | 17 | 15.9 | 84 | 1,24 | M14 | 18 600 | 10 800 | UC206 | 16.92 | |
| 35 | 8UCP207 | 47.6 | 167 | 48 | 59.5 | 127 | 17 | 20 | 18 | 17.5 | 93 | 1,58 | M14 | 24 500 | 14 600 | UC207 | 20.27 | |
| 40 | 8UCP208 | 49.2 | 184 | 54 | 69 | 137 | 17 | 20 | 18 | 19 | 100 | 1,89 | M14 | 27 700 | 17 000 | UC208 | 21.92 | |
| 45 | 8UCP209 | 54.0 | 190 | 54 | 69 | 146 | 17 | 20 | 20 | 19 | 106 | 2,14 | M14 | 31 000 | 19 500 | UC209 | 27.33 | |
| 50 | 8UCP210 | 57.2 | 206 | 60 | 74.5 | 159 | 20 | 23 | 21 | 19 | 113 | 2,66 | M16 | 33 500 | 22 500 | UC210 | 37.33 | |
| 55 | 8UCP211 | 63.5 | 219 | 60 | 76 | 171 | 20 | 23 | 23 | 22.2 | 125 | 3,31 | M16 | 41 500 | 28 000 | UC211 | 48.56 | |
| 60 | 8UCP212 | 69.8 | 241 | 70 | 89 | 184 | 20 | 23 | 25 | 25.4 | 138 | 4,90 | M16 | 50 000 | 34 500 | UC212 | 50.90 | |

UCP3

| Ø d arbre | TYPE (code) | dimensions (mm) | | | | | | | | | | | Poids (Kg) | Ø Vis | Coef. charge (N) | | Roulements | P. HT € |
|-----------|-------------|-----------------|-----|----|----|-----|----|----|----|----|-----|-----|------------|--------|------------------|-------|------------|---------|
| | | h | a | b | B1 | c | S1 | S2 | g | n | w | Dyn | | | Stat | | | |
| 25 | 8UCP305 | 45 | 175 | 45 | 38 | 132 | 17 | 20 | 15 | 17 | 85 | 1,4 | M14 | 20 200 | 11 930 | UC305 | 28.53 | |
| 30 | 8UCP306 | 50 | 180 | 50 | 43 | 140 | 17 | 20 | 18 | 17 | 95 | 1,8 | M14 | 25 400 | 14 300 | UC306 | 37.20 | |
| 35 | 8UCP307 | 56 | 210 | 56 | 48 | 160 | 17 | 25 | 20 | 19 | 106 | 2,8 | M14 | 31 900 | 18 200 | UC307 | 46.04 | |
| 40 | 8UCP308 | 60 | 220 | 60 | 52 | 170 | 17 | 27 | 22 | 19 | 116 | 3,0 | M14 | 38 500 | 23 000 | UC308 | 55.14 | |
| 45 | 8UCP309 | 67 | 245 | 67 | 57 | 190 | 20 | 30 | 24 | 22 | 129 | 4,1 | M16 | 50 500 | 30 500 | UC309 | 84.64 | |
| 50 | 8UCP310 | 75 | 275 | 75 | 61 | 212 | 20 | 35 | 27 | 22 | 143 | 5,8 | M16 | 59 000 | 36 600 | UC310 | 90.94 | |
| 55 | 8UCP311 | 80 | 310 | 80 | 66 | 236 | 20 | 38 | 30 | 25 | 154 | 7,4 | M16 | 68 000 | 43 000 | UC311 | 133.60 | |
| 60 | 8UCP312 | 85 | 330 | 85 | 71 | 250 | 25 | 38 | 32 | 26 | 165 | 9,4 | M20 | 78 000 | 49 500 | UC312 | 163.90 | |

Dimensions

